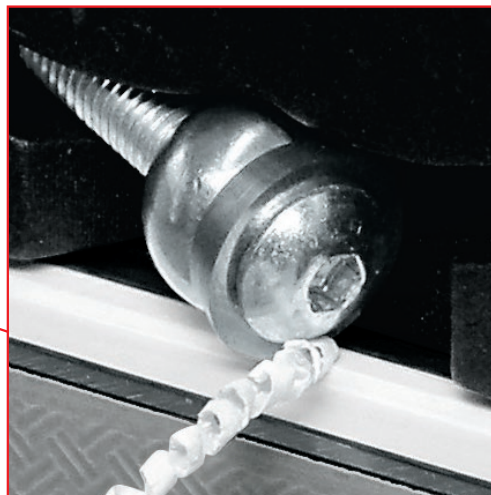
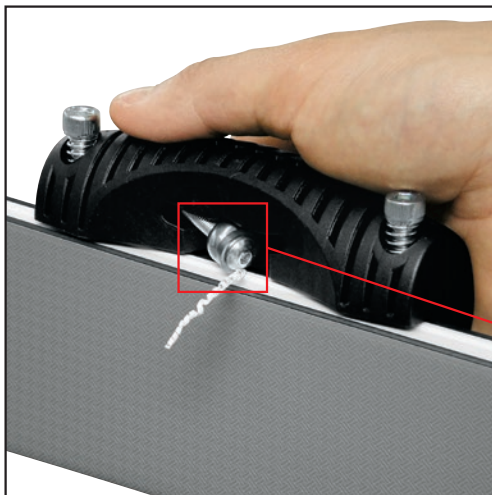




3004

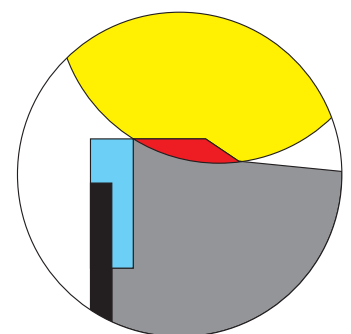
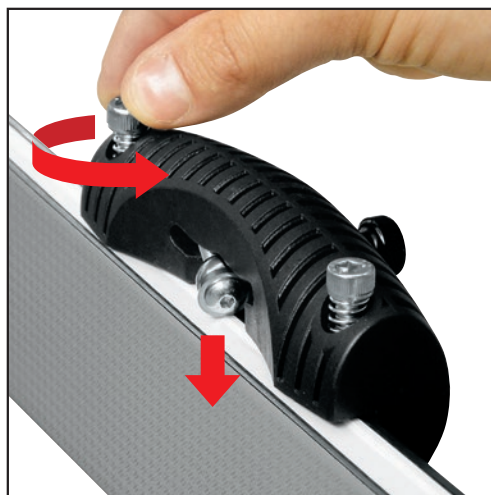
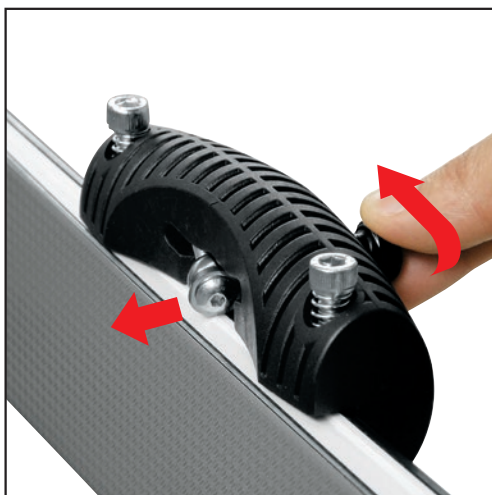
SIDEWALL SHARP

- Ergonomic sidewall planer
- Easy handling, steady grip, maximum accuracy
- Best results, minimum effort
- Adjustable blade position and cutting depth
- Right and left hand use
- For ski and snowboard



technical info

The use of the sidewall planer is essential to remove excess of material which may compromise the file cutting and make it difficult to obtain the right angle. It is necessary to use this tool before filing, so that the file can make a precise work on the edges.



- sidewall: remove before filing
- titanium blade
- steel edge
- base
- ski or snowboard body